



NIEUWKOOP

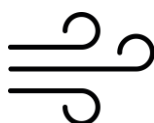
METEN.NL

QUICK MANUAL



RG1350

DATALOGGER 4-20 mA

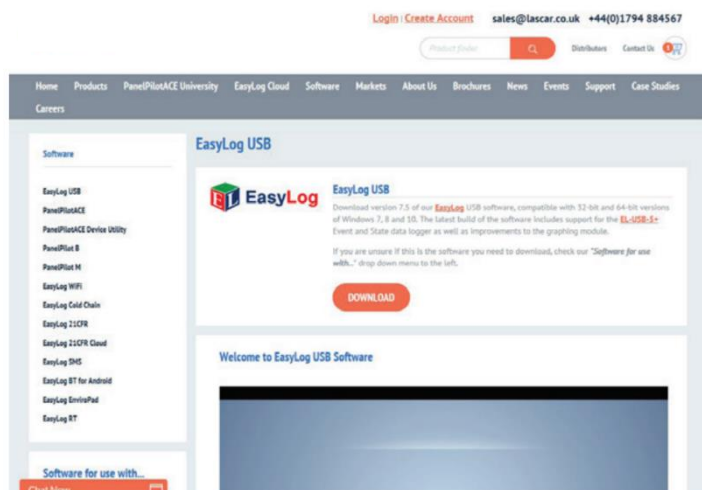


TO MEASURE  TO KNOW

DOWNLOAD AND INSTALL SOFTWARE

Windows™ 7/8/10 (32 & 64bit)

Visit www.meten.nl, search for “RG1350” and click ‘Download software’.



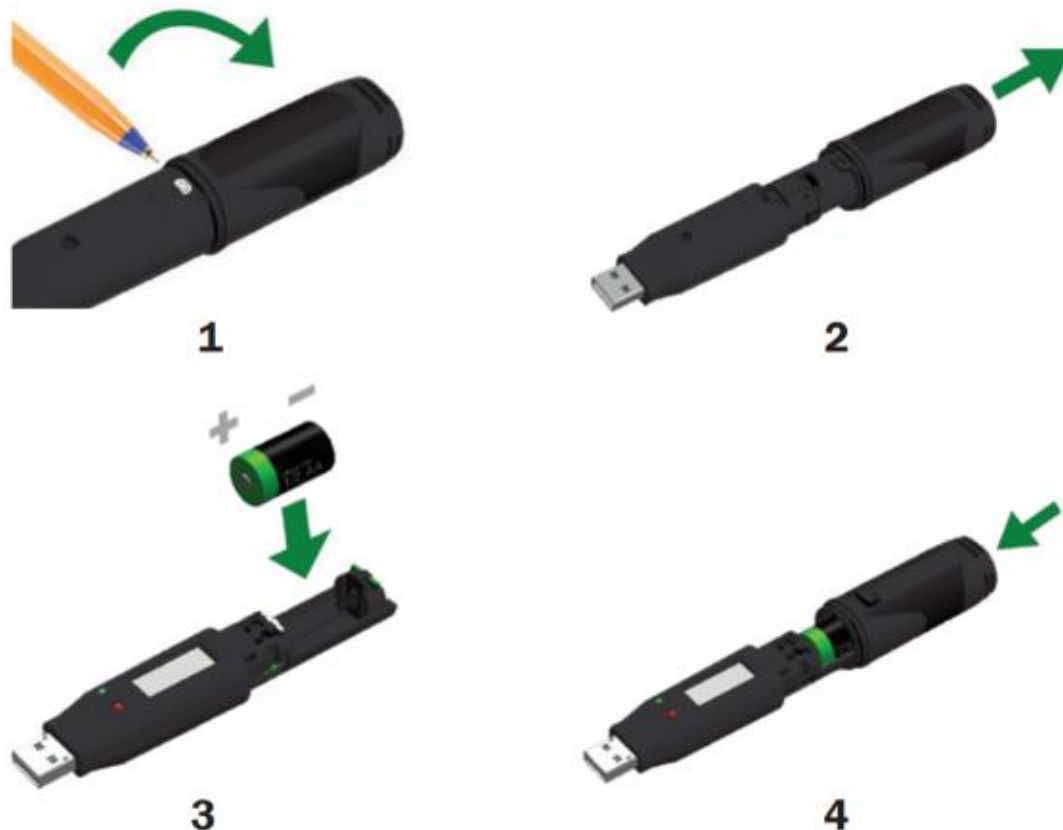
USING THE SOFTWARE

- Insert the data logger into an available USB port on your PC.
- Double click on the EasyLog USB icon on your Windows™ desktop. This will load the configuration software. Click ‘Set up and start the USB data logger’ and follow the set-up wizard.
- When setup is complete, the data logger should be removed from the USB port. **Do not leave your data logger in the USB port for extended periods as this will cause some of the battery capacity to be lost** (with the exception of EL-USB-1-RCG).
- You can also download the data from a logger that has been recording or view previously saved data from the software.



REPLACING YOUR DATA LOGGER'S BATTERY

Your data logger is provided with a 3.6V 1/2AA battery already installed. You can change the battery by following the instructions below.





TO MEASURE  TO KNOW

Nieuwkoop BV

Aalsmeerderweg 249 -S

1432 CM AALSMEER

0297 325836

info@nieuwkoopbv.nl

www.meten.nl



NIEUWKOOP