



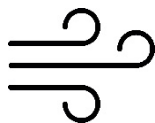
**NIEUWKOOP**

# QUICK MANUAL



## RG2023

RV/TEMPERATURE DATALOGGER



TO MEASURE  TO KNOW

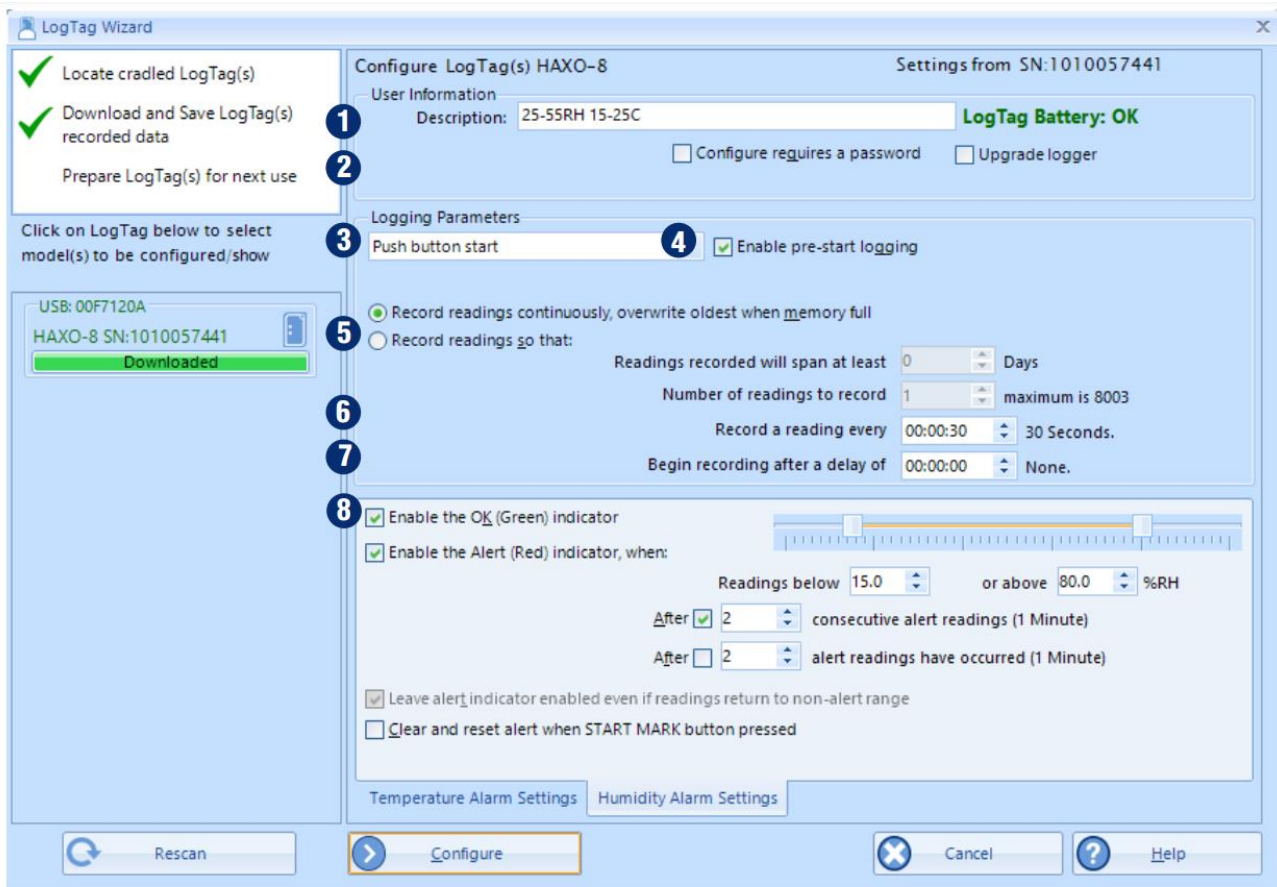


## 1. SETUP AND CONFIGURATION

Download and install Analyzer software from our website: [www.meten.nl](http://www.meten.nl).

Connect the Interface Cradle to your computer and insert the Logger into the Interface Cradle with the label to the front. You will hear a click as the contacts engage.

Start Analyzer. In order to start using your Logger, you need to configure it via the 'LogTag Wizard'. This can be accessed by pressing 'F2' on your keyboard or by clicking the 'Wizard' icon.



1. **Description:** Enter details to identify your Logger. E.g. refrigerator 3. Also the status of your battery is indicated here.
2. **Password:** You have the option to specify a password, which needs to be entered the next time someone configures the Logger or when the results will be downloaded.
3. **Push button start or date/time start:** You can start your Logger by pushing the start button or automate the start by selecting a date/time when the Logger should start recording.
4. **Enable pre-start logging:** When you select this option the Logger will start recording immediately after configuration. This is useful in case the user forgets to start the Logger.
5. **Record readings so that...:** Specify how long you wish to record for.
6. **Record a reading every...:** Choose the duration between each reading.
7. **Begin recording after a delay of:** Enter a start delay if required. A start delay commences upon pressing the start button. This allows the Logger to reach the right temperature before recording starts. This option wont be available with a date/time start.
8. **Enable the Alert (red) indicator:** Specify the upper humidity alarm and/or the lower humidity alarm if you would like to trigger an alarm.



## 2. STARTING THE LOGGER

If the Logger has been configured with a Date/Time start, it will start automatically at the configured time. For push button start, press and hold the **'START/MARK'** button until the red and green LED's start alternate flashing, then release.

Note: Have you forgotten to press the start button? A pre-start recording feature can be activated, to make sure the Logger will monitor the temperature even before the trip has started. No alarms are processed during pre-start logging

## 3. DOWNLOAD / RESULTS

1. Open Analyzer.
2. Insert the Logger into the Interface Cradle.
3. After a few seconds, the downloaded data will appear. Data can be displayed in Chart-, Data-, Summary- or Day Summary formats by clicking the tabs at the bottom of the window. Data can also be saved in a number of formats including TXT, PDF, HTML and CSV for import.

## 4. ADDITIONAL INFORMATION

### Light patterns

SIGNAL	SEQUENCE	OCCURRENCE
Wake-up signal	<b>4</b> alternate flashes of green/red LED's	<ul style="list-style-type: none"> <li>• Displayed after configuration has been successfully applied to the Logger.</li> <li>• When a Logger is woken from hibernations state.</li> </ul>
Start-up signal	<b>10</b> alternate flashes of green/red LED's	<ul style="list-style-type: none"> <li>• Displayed when the Logger starts its recording cycle.</li> <li>• The delay time is re-started (followed by delay signal).</li> </ul>
Logging active, no alert present	Single flash of green LED every <b>4</b> seconds	<ul style="list-style-type: none"> <li>• Indicates the Logger is recording.</li> <li>• This is not displayed when pre-start is active and the main logging cycle has not yet started. It is also not displayed when the green LED has been turned off in the configuration screen.</li> </ul>
Logging finished, no alert present	Single flash of green LED every <b>8</b> seconds	<ul style="list-style-type: none"> <li>• Indicates Logger has finished recording.</li> <li>• This is not displayed when the green LED has been turned off in the configuration screen. Will also be displayed when unit has been woken up from hibernation.</li> </ul>
Logging finished, alert condition present	Single flash of red LED every <b>8</b> seconds	<ul style="list-style-type: none"> <li>• Indicates the Logger has finished recording and an alert condition was present during the trip.</li> </ul>
Logging active, alert condition present	Single flash of red LED every <b>4</b> seconds	<p>Displayed when the Logger has been detected an alert condition and the Alert LED has been activated.</p> <p>If an alert is present you cannot determine if the unit is still logging or has finished its log cycle. If the Alert LED has not been activated during configuration, in essence the visual indicators have been disabled, and the green LED will flash every 4 or 8 seconds as above.</p>



Hibernation	LED's are not active	Hibernation reduces the current consumption on Loggers to very low levels. See next page for more information.
-------------	----------------------	----------------------------------------------------------------------------------------------------------------

**BATTERY REPLACEMENT**

The battery of your Logger can't be replaced. The battery status can be found in the configuration screen.

Please note that the products do contain a non-rechargeable lithium battery, which must be disposed of in accordance with local regulations.

**HIBERNATION**

To prolong the life of your Logger you can hibernate your Logger between trips when it is not being used for extended periods. Loggers can be hibernated via Analyzer by selecting 'Hibernate' from the menu. When hibernated, all logging functions are suspended, all indicators are turned off and internal components are switched to low power. This reduces the current consumption on Loggers to very low levels.

**CALIBRATION**

In order to calibrate your Logger, you need to use our Calibrate software. The Recorder releases our Calibrate software only to selected users who have suitable equipment and credentials relating to standard practices of temperature and/or humidity calibration.

If you require calibration of your Logger(s), please contact your supplier.

**WATER DAMAGE**

Please remember that none of the Loggers can be immersed into liquids. For more specific information, check your user guide for the IP rating.

**CONTACT CLEANING**

Keep the three metal contacts at the back of the Loggers clean and free from tape residue, dirt or other contaminants, which could result in communications problems. If required, clean them with a soft pencil eraser, but don't use abrasive materials as you may permanently damage them.



TO MEASURE  TO KNOW

---

**Nieuwkoop BV**

Aalsmeerderweg 249 -S

1432 CM AALSMEER

0297 325836

[info@nieuwkoopbv.nl](mailto:info@nieuwkoopbv.nl)

[www.meten.nl](http://www.meten.nl)



**NIEUWKOOP**